



Installation Guide

DEVIlink™ RU

Electronic Repeater Unit

www.devi.com

DEVI® *RU*

Table of Contents

1	Introduction	2
	1.1 Technical Specifications	3
	1.2 Safety Instructions	5
2	Mounting Instructions.....	5
3	Settings.....	6
	3.1 Initiate transmission test on the Repeater Unit	6
	3.2 Factory reset	7
4	Symbols	7
5	Radio Equipment Directive	8
6	Warranty.....	8
7	Disposal instructions	8

1 Introduction

The DEVlink™ RU Repeater Unit is used for extending the wireless transmission range between DEVlink™ CC Controller, DEVlink™ RS Room thermostats and other connected components in DEVlink™ system.

This is particularly useful in larger installations where physical distance between components may prevent proper wireless connection e.g. where radio transmission barriers occur, i.e. where radio signals may be obstructed by heavy walls, metal objects, etc.

The system supports up to three Repeater Units installed in a chain between the relevant DEVIlink™ Room thermostat and the DEVIlink™ CC Controller.

More parallel chains of Repeater Units from a Controller are possible.

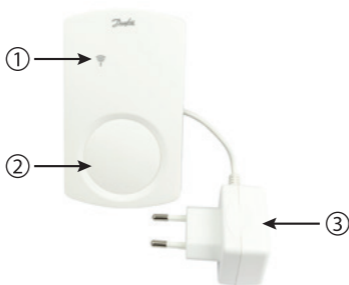
1.1 Technical Specifications

Operation voltage	230 VAC/15 V DC $\pm 10\%$
Ambient temperature	-10 to +40 °C
Storage temperature	-20 to +65 °C
Ball pressure test temperature	75 °C
Pollution degree	2 (domestic use)
Transmission frequency	868.42 MHz
Transmission range	up to 30 m in normal buildings
Max. repeaters in a chain	3
Transmission power	Max. 1 mW
Software class	A
IP class	21
Length of mains cable	3.0 m

Dimensions	Dimensions 125 x 107 x 25 mm
Weight	100 g

Electrical safety and Electro-Magnetic Compatibility for this product is covered by the compliance with the EN/IEC Standard "Automatic electrical controls for household and similar use":

- EN/IEC 60730-1 (general)
- EN/IEC 60730-2-9 (thermostat)



- ① LED Indicator (red)
- ② Round front Cover hiding push button
- ③ Transformer/power supply plug

1.2 Safety Instructions

Make sure the power supply to the thermostat is turned off before installation.

Please also note the following:

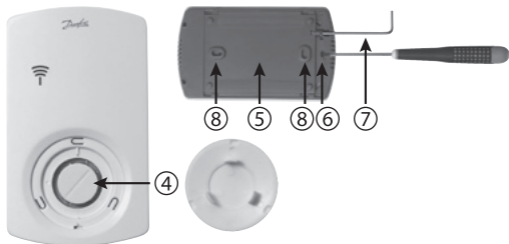
- The installation of the thermostat must be done by an authorized and qualified installer according to local regulations.
- The thermostat must be connected to a power supply via an all-pole disconnection switch.
- Always connect the thermostat to continuous power supply.
- Do not expose the thermostat to moisture, water, dust, and excessive heat.

2 Mounting Instructions

After the Repeater Unit has been assigned to the Controller, disconnect the temporary 230 V power supply and mount the Repeater Unit on the right location.

- ④ Push button
- ⑤ Back plate
- ⑥ Hole for releasing front cover
- ⑦ Back plate lock/unlock (Unbrako)

⑧ Screw hole for wall mounting



3 Settings

Configuring of the DEVIlink™ RU Repeater Unit to the DEVIlink™ CC by adding to it as a service device. See the DEVIlink™ CC manual for further information.

3.1 Initiate transmission test on the Repeater Unit

- Press the push button ④.
- LED ① goes **ON**.

If Link test is satisfactory

- LED ① goes **OFF**.
- Mount the front cover again.

If Link test is unsatisfactory

- LED ① flashes 5 times.

If the transmission between DEVlink™ RU Repeater Unit and DEVlink CC is not successful

1. Try to relocate the DEVlink™ RU Repeater Unit.
2. Or install additional DEVlink™ RU Repeater Units (up to three)

3.2 Factory reset

- Disconnect the DEVlink™ RU Repeater Unit from the power supply.
- Release the round front cover hiding push button
- Press and hold down the push button ④.
- Meanwhile plug in the power supply again.
- Release the push button ④ when the LED ① goes **ON** and **OFF**.

4 Symbols

LED modes:

- LED permanent lighting – **ON**
- No LED light – **OFF**

5 Radio Equipment Directive

SIMPLIFIED EU DECLARATION OF CONFORMITY

Hereby, Danfoss A/S declares that the radio equipment type DEVIlink™ RU is in compliance with Directive 2014/53/EU

The full text of the EU declaration of conformity is available at the following internet address: **devi.danfoss.com**

6 Warranty



7 Disposal instructions



Danfoss A/S
Electric Heating Systems
Ulvehavevej 61
7100 Vejle
Denmark

Phone: +45 7488 8500
Fax: +45 7488 8501
E-mail: info@DEVI.com
Web: www.DEVI.com

Danfoss can accept no responsibility for possible errors in catalogues, brochures and other printed material. Danfoss reserves the right to alter its products without notice. This also applies to products already on order provided that such alterations can be made without subsequential changes being necessary in specifications already agreed. All trademarks in this material are property of the respective companies. DEVI and the DEVI logo-type are trademarks of Danfoss A/S. All rights reserved

